



European Catalogue



***Test Tools HVACR
Professionals Trust***

Fieldpiece Overview

From the humble beginnings in the founder's garage in 1990, to the international powerhouse Fieldpiece is today, the mission at Fieldpiece has remained the same. To provide instruments that HVACR professionals can trust to help them do more. Everyday.

We do that by constantly listening to the pros in the field, and then creating tools that solve their problems. We ride along with, and help train, HVACR professionals all over the world. This allows Fieldpiece to continually improve products, and design innovative instruments HVACR professionals need to make their jobs easier, faster, safer and more complete.

Today, Fieldpiece is the HVACR industry's leading innovator in these product categories:

- A/C Analysis
- Multimeters
- Charging
- Recovery
- Leak Detection
- Temp and Relative Humidity
- Air Flow
- Combustion
- Pocket Tools
- Tool Bags
- Job Link® System App

Now with European headquarters in The Netherlands, HVACR professionals have direct access to the exceptional sales, shipping, service, and warranty that Fieldpiece is known for.

Fieldpiece Instruments B.V.

Kingsfordweg 151

1043GR Amsterdam

The Netherlands

+31 20 369 0470 / europe@fieldpiece.com

C O N T E N T S

Wireless	4
Leak Detectors	10
Multimeters	13
Charging	20
Airflow	24
Combustion	26
Pocket Tools	28
Bags	30

Inspect, Connect, Report

The Job Link® System mobile app* is a powerful tool HVACR professionals use to run their entire job through. View live measurements, calculations and diagnostics, and email and store reports for future reference.

Do even more with Job Link subscription plans with Cloud access. Create in-depth reports and great looking invoices. Save system measurements and customer details. Fill out inspection checklists. Take photos and notes for each system. All stored in the cloud so you can access your data while on the go.

Professional Reports

Wow your customers with in-depth reports. Customise to your company's look.

Live Measurements

Get live measurements from multiple places at once. Make adjustments with real-time, dynamic data.

Helpful Diagnostics

Minimise call backs by diagnosing a system correctly the first time. Impress your customers with easy to understand air flow and charge diagnostics.

Invoicing and Accounting Integration

Create and send professional invoices with job details. Easily export CSV files for compatibility with accounting programs, or transmit directly to QuickBooks.

Photos and Notes

Keep helpful notes and attach photos to record state of equipment and keep for future reference.

Inspection Checklists

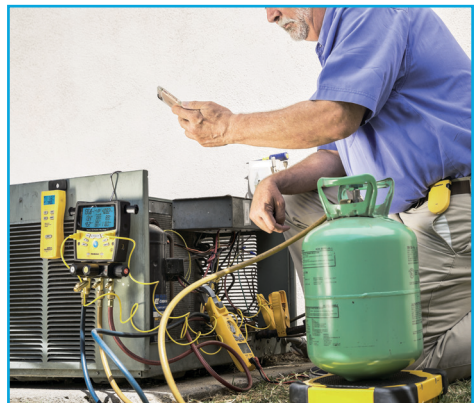
Highlight maintenance and sales opportunities. Verify job completion with your customers.

Build Teams

Create and assign your technicians to teams. Easily access all job and customer history from your team. Quickly search job and customer data.

Live Look-in

See the same measurements your technician is seeing in the field to easily help diagnose problems and reduce call backs!



* Job Link System app currently in English only.

The Job Link® System streamlines your business and customer communication.



Job Link® System Compatible Tools

- SMAN 4-Port Digital Manifolds*
- SRS3 Refrigerant Scale
- SDP2 Dual In-duct Psychrometer*
- SC460 and SC660 Clamp Meters*
- Job Link® System Temperature, Pressure, and Psychrometer Probes

*Requires JL2 Wireless Transmitter



Job Link® System Probes

JL3PC, JL3PR, JL3RH

Easy, long range, powerful.

Take a full system snapshot quickly and easily with Job Link Probes. Each tool is designed for agility and speed. The pressure probe fits into tight spaces. The pipe clamp uses a new rapid rail thermocouple design delivering accuracy, speed, and agility, even on the most awkward pipe configurations. The psychrometer's flexible narrow probe and configurable magnet make it easy to measure supply plenums, ducts, or elevated registers. All probes are expandable for multi-circuit systems.



Phone not included

- 106 Meters wireless range
- iOS® and Android™
- Water Resistant
- Email Reports
- Instant and Accurate Pipe Temps
- High/Low Side Switch and Indicator
- Quick-Access Protective Case
- Connect Directly to Mobile Device





JL3PC - Pipe Clamp Specifications

Battery Type	2 x AAA
Battery Life	150 hours typical alkaline. LED blinks red when battery replacement is needed.
Wireless Range	106 meters line of sight. Distance decreases through obstructions.
Operating Environment	0°C to 50°C at <75% RH
Water Resistant	Designed to IP55
Pipe Surface Compatibility	Electrically conductive
Pipe Size Compatibility	6.4mm to 34.9mm OD
Sensor Type	Rapid Rail™ Sensor thermocouple (nickel chromium / nickel aluminum)
Measurement Range	-46°C to 125°C
Stabilization Time	3 seconds typical
Accuracy	±0.6°C



JL3PR - Pressure Specifications

Battery Type	2 x AAA
Battery Life	150 hours typical alkaline. LED blinks red when battery replacement is needed.
Water Resistant	Designed to IP55
Wireless Range	106 meters line of sight. Distance decreases through obstructions.



JL3RH - Psychrometer Specifications

Battery Type	2 x AAA
Battery Life	150 hours typical alkaline. LED blinks red when battery replacement is needed.
Wireless Range	106 meters line of sight. Distance decreases through obstructions.
Flexible Probe	9mm diameter; 235mm length
Measurement Range	-20°C to 60°C
Accuracy	±(0.5°C) 0°C to 45°C, ±(1°C) -20°C to 0°C, 45°C to 60°C



Job Link Charge and Air Kit - JL3KH6

- 2 Temperature Pipe Clamps
- 2 Pressure Probes
- 2 Psychrometer Probes
- 1 Padded protective case



Job Link Charge Test Kit - JL3KR4

- 2 Temperature Pipe Clamps
- 2 Pressure Probes
- 1 Padded protective case

4-Port Wireless Manifold

SMAN460

The Wireless Manifold for HVACR.

The SMAN460 Digital Manifold is more rugged than ever. Based on years of technician feedback, they are not only tough, but they show everything you need all at once.

View your target superheat, and superheat and subcooling in real-time with wireless measurements, so you can see how your charge is affecting the measurements.



Do More with the Wireless Advantage

- Measures:
 - 2 Pressures
 - 2 Temperatures
 - Vacuum in Microns
- Calculates:
 - Superheat
 - Subcooling
 - Target Superheat
 - Vapor Saturation
 - Liquid Saturation
- Wireless for Real-time Measurements
- 3/8" Vacuum Port for Faster Evacuations
- Expanded Temperature Tolerance to go from Freezers to Rooftops
- Large Screen with All Measurements in Clear Sight
- 45 Built in Refrigerants with Easy Future Refrigerant Updates via Mini USB Connection

Specifications:

Refrigerants Wireless Range Batteries Battery Life Connector Type

45 sorted by popularity
30.5 Meters
1.5V AA x 6
350 hrs typical alkaline (no backlight or micron gauge)
3x Standard 1/4" NPT male flare fitting*
1x Standard 3/8" NPT male flare fitting*

Measurement:

Pressure
Vacuum
Microns
Temperature

Range:

0 to 580Psig
29"HgV to 0"HgV
0 to 9999
-70°C to 537.7°C

Best Accuracy/ Best Resolution

±1Psig/0.1
±0.2"HgV/0.1
±(5%rdg + 5)/1
±.5°C*

*System accuracy (SMAN460 + K Type thermocouple after field calibration on SLT or LLT)



Job Link® System app currently available in English. Wireless transmitter, model number JL2, also needed for Job Link® System app when using the SMAN460.

3-Port Digital Manifold

SMAN360

More Features, More Answers.

HVACR professionals need a refrigerant manifold on nearly every job. Digital manifolds make these jobs faster, easier, and more precise. The rugged new screen shows everything you need all at once.

View your calculated target superheat while monitoring, how your charge is affecting actual and superheat and subcooling.



The Right Stuff

- Measures:
 - 2 Pressures
 - 2 Temperatures
 - Vacuum in Microns
- Calculates:
 - Superheat
 - Subcooling
 - Target Superheat
 - Vapor Saturation
 - Liquid Saturation
- Expanded Temperature Tolerance to go from Freezers to Rooftops
- Large Screen with All Measurements in Clear Sight
- 45 Built in Refrigerants with Easy Future Refrigerant Updates via Mini USB Connection

Specifications:

Refrigerants	45 sorted by popularity
Batteries	1.5V AA x 6
Battery Life	350 hrs typical alkaline (no backlight or micron gauge)
Connector Type	3x Standard 1/4 NPT male flare fitting*

Measurement:	Range:	Best Accuracy/ Best Resolution
Pressure	0 to 580Psig	±1Psig/0.1
Vacuum	29"HgV to 0"HgV	±0.2"HgV/0.1
Microns	0 to 9999	±(5%rdg + 5)/1
Temperature	-70°C to 537.7°C	±.5°C*

* System accuracy (SMAN360 + K Type thermocouple after field calibration on SLT or LLT)

Infrared Refrigerant Leak Detector

SRL2K7

This infrared leak detector helps you find leaks with pinpoint accuracy. It automatically adjusts to high ambient refrigerant levels, and by using the required sweeping technique, techs can quickly and easily uncover the exact location of the leak.

- Equal sensitivity to all refrigerants pinpoint accuracy
- Sensor sensitivity doesn't weaken over time
- Rechargeable eight hour lithium ion battery
- Turbo mode to pick up very low level leaks

Included

5 O-rings and 10 Replacement Filters – RFL2

23cm Flex Extension Probe – RFE2

23cm Rigid Extension Probe – RRE2

Case – ABMK3

Wall Charger – RWA2

Car Charger – RCA2



Specifications:

Gases Measured
Sensing Element
Response Time
Sensitivity Levels

CFC, HFC, HCFC and blends
Infrared
Less than 1/2 second to 1 second
HIGH 2.8g/year and higher
MED 14g/year and higher
LOW 28.3g/year and higher
Meets current SAE standards

Accuracy
Calibration
Warm Up
Probe Length
Battery Chargers
Battery
Battery Life

Automatic
30 seconds
12.7cm (61cm with included 23cm extension probes.)
Wall charger and vehicle charger included
3.7VDC (nominal) rechargeable lithium ion battery
Approx. 8 hours if fully charged

Heated Diode Refrigerant Leak Detector

SRL8

The Traditional Heated Diode Detector.

The SRL8 is a rugged and accurate traditional leak detector that senses all CFCs, HFCs, HCFCs, and blends. This field tested detector is at the top of its class, and easily finds leaks by increasing the magnitude of indication the higher the concentration of refrigerant.

- Sensitivity below 2.8g/yr
- 15-hour rechargeable lithium battery
- Auto power off
- Manual or automatic zeroing
- Magnetic hanger
- Three sensitivity levels

Included

5 O-rings and 10 Replacement Filters – RFL2

23cm Flex Extension Probe – RFE2

23cm Rigid Extension Probe – RRE2

Case – ABMK3

Wall Charger – RWA2

Car Charger – RCA2



Specifications:

Gases Measured

CFC, HFC, HCFC and blends

Sensing Element

Heated

Compliance

CE, EN 14624

Response Time

Less than 1/2 second to 1 second

Sensitivity Levels

HIGH Better than 2.8g/year

MED 17g/year

LOW 187g/year

Calibration

Automatic or manual zeroing

Warm Up Time

30 seconds

Probe Length

12.7cm (23cm extensions included)

Battery Chargers

Wall charger and vehicle charger included

Battery Type

3.7VDC (nominal) rechargeable lithium ion battery

Battery Life

Approx. 15 hours if fully charged

Carbon Dioxide Leak Detector

SCL2

The SCL2 Carbon Dioxide Leak Detector is a portable CO₂ (R-744) instrument with a superior combination of sensitivity, speed, sensor life, battery life, and ease of use.

Easily find leaks on commercial refrigeration systems, soda machines, or any other system using R-744. Pinpoint tiny leaks in high concentration CO₂ environments. The SCL2 Carbon Dioxide Leak Detector finds leaks as small as 6 grams per year. It also has three sensitivity settings to keep false triggering to a minimum.

Gas is pumped through the tip of the wand into the sensor within the SCL2 body. The sensor detects changes in concentration, not absolute concentration, allowing the SCL2 to differentiate CO₂ concentrations higher than concentrations normally found in the ambient air.

The SCL2 Carbon Dioxide Leak Detector comes with a wall and car charger for its ultra compact lithium ion battery which last for a full eight hours.

- Find R-744 refrigerant leaks
- Long-life sensor made to last up to ten years
- Three sensitivity levels down to 6g per year
- Senses change to work in contaminated environments
- Rechargeable lithium ion battery



Specifications:

Gases Measured
Sensing Element
Response Time
Sensitivity Levels

Accuracy
Calibration
Warm Up Time
Probe Length
Extension Lengths

CO₂ (Carbon Dioxide)
 Infrared
 Less than 1/2 second to 1 second
 HIGH 6g / year and higher
 MED 14g / year and higher
 LOW 28g / year and higher
 Meets current SAE standards
 Automatic
 30 seconds
 380 mm
 230 mm x 2 (needle, flex)

Digital Multimeter

LT16A

The LT series cover most parameters and ranges technicians need for HVACR applications. And to further expand testing capabilities, the leads connect directly to any Fieldpiece accessory head.

- Continuity indicator
- Bright, blue backlight
- Low ohm ranges
- Both mA and μ A for testing flame rectifier diodes
- MIN/MAX function
- Probe storage
- Magnetic hanger and tilt stand

Included

Deluxe Silicone Test Leads – ADLS2

Short Alligator Lead Extensions – ASA2

400A Amp Clamp Accessory – ACH4

Nylon Case – ANC5



Specifications:

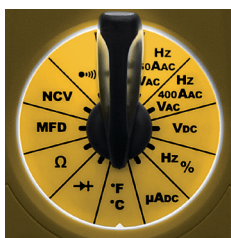
Function	Range	Best Accuracy/ Best Resolution
VAC True RMS	200m, 2000m, 20V, 200V, 600V	1.5%rdg \pm 5dgt/0.1m
VDC	200m, 2000m, 20V, 200V, 600V	0.5%rdg \pm 1dgt/0.1m
MFD	200, 2k, 20k	4.0%rdg \pm 10dgt/0.1
AAC True RMS	200 μ , 20m, 200m, 2A	1.5%rdg \pm 5dgt/0.1 μ
AAC True RMS (using clamp)	400	3.5%rdg \pm 6dgt/0.1
ADC	200 μ , 20m, 200m, 2A	1.0%rdg \pm 1dgt/0.1 μ
Hz	10 to 40k	0.1%rdg \pm 3dgt/1
Ohms	200, 2K, 200K, 20M, 2000M	1%rdg \pm 4dgt/0.1
Continuity	<100ohms	Beep

HVACR Clamps Techs Trust

SC600 Series

Packed with more features and measurements than any clamp meter in the HVACR industry, the loaded SC600 series features lead storage, a swivel head, test lead holder for safer testing, and a heavy duty magnetic strap.

- Top-of-the-Line Meter
- Swivel-Head Clamp
- Magnetic Strap
- Lead Storage
- Dual Display
- Clamp Test-Lead Holder
- Frequency via Leads & Clamps
- Dial Backlight (SC640 & 660)
- Jaw Flashlight (SC640 & 660)
- LCD Backlight (SC640 & 660)
- Phase Rotation (SC660)
- Dual Temperature Delta T (SC660)
- Smart Phone Compatible with Job Link App (SC660) JL2 Transmitter Required



Dial Backlight Lights up Selector Switch for Poorly Lit Places (SC640/660)



Convenient Lead Storage

SC620 Specifications:

Function:	Range:	Best Accuracy/ Best Resolution
Volts AC	600	1.2%±8 / 0.0001
Amps AC	400	2.0%±10 / 0.01
Volts DC	600	0.5%±2 / 0.0001
µAmps DC	500	1.0%±2 / 0.1
Ohms	50M	1.0%±5 / 0.1
Microfarads	5000	3%±5 / 0.001
Hz (clamp)	10 to 400	0.1%±5 / 0.1
Hz (leads)	10 to 1M	0.1%±5 / 0.1
Duty Cycle %	5 to 95	2%±10 / 0.1
±.5°C	-34°C to 500°C	±.5°C* / 0.1
Battery	9V, 200 hrs Typical Alkaline	

* System accuracy (SC620 meter + K Type thermocouple after field calibration)

SC640 Specifications:

Measurement:	Range:	Best Accuracy/ Best Resolution
Volts AC	600	1.2%±8 / 0.0001
Amps AC	400	2.0%±10 / 0.01
Volts DC	600	0.5%±2 / 0.0001
µAmps DC	500	1.0%±2 / 0.1
Ohms	50M	1.0%±5 / 0.1
Microfarads	5000	3%±5 / 0.001
Hz (clamp)	10 to 400	0.1%±5 / 0.1
Hz (leads)	10 to 1M	0.1%±5 / 0.1
Duty Cycle %	5 to 95	2%±10 / 0.1
±.5°C	-34°C to 500°C	±.5°C* / 0.1
Battery	9V, 100 hrs Typical Alkaline	

* System accuracy (SC640 meter + K Type thermocouple after field calibration)

SC660 Specifications

Measurement:	Range:	Best Accuracy/ Best Resolution
Wireless	.35m to 30m	
Volts AC	600	1.2%±10 / 0.0001
Amps AC	400	2.0%±10 / 0.01
Volts DC	600	0.5%±5 / 0.0001
Amps DC	400	2.0%±10 / 0.01
µAmps DC	1000	1.0%±5 / 0.1
Ohms	50M	1.0%±5 / 0.01
Microfarads	10000	3%±5 / 0.00001
Hz (clamp)	10 to 400	0.1%±5 / 0.1
Hz (leads)	10 to 1M	0.1%±5 / 0.01
Duty Cycle %	5 to 95	2%±10 / 0.1
±.5°C	-50C to 1300°C	±.5°C* / 0.1
Phase Rot.	80±5 to 600VAC	1.5%±10 / 0.1
Battery	9V, 100 hrs typical alkaline (no backlight or wireless)	

* System accuracy (SC660 meter + K Type thermocouple after field calibration)

SC600 Series**Loaded Clamp Meter Line**

	SC620	SC640	SC660
True RMS		•	•
Smart Phone Compatible With Job Link App			•
Dual Temperature Delta T			•
Phase Rotation			•
Volts AC/DC	•	•	•
Inrush		•	•
Swivel Clamp	•	•	•
Magnetic Strap	•	•	•
Probe Storage	•	•	•
5,000 Count Dual Display	•	•	
10,000 Count Dual Display			•
Temperature °F/°C	•	•	•
Capacitance	•	•	•
Duty Cycle %	•	•	•
400 Amps AC	•	•	•
400 Amps DC			•
Microamps DC	•	•	•
Frequency via Leads/Clamp	•	•	•
Non Contact Voltage	•	•	•
50 Mega Ohm with 0.1 Resolution	•	•	•
Continuity	•	•	•
Diode Test	•	•	•
Hold	•	•	•
Clamp Probe Holder	•	•	•
Dial Backlight		•	•
Clamp Jaw Light		•	•
LCD Backlight		•	•
Low Battery Indicator	•	•	•
Battery: 9V, 100 hrs		•	•
Battery: 9V, 200 hrs	•		
Compliance with UL 3rd Edition	•	•	•

Get the Right Tools

SC400 Series

The mid-sized SC400 meters are essential for all types of electrical HVACR testing. The dual display makes it easy to view both voltage and amperage readings at the same time. The non-contact voltage indicator and the probe holder make electrical testing safer.

- Packed Meter, Affordable Price
- Dual Display
- Clamp Test-Lead Holder
- True RMS (SC440 & 460)
- Inrush (SC440 & 460)
- Magnetic Strap (SC440 & 460)
- Phase Rotation (SC460)
- Wireless Measurements
- Job Link Compatible (SC460)
JL2 Transmitter Required



SC420

SC440

SC460



Sturdy Magnetic Strap



SC420 Specifications:

Function:	Range:	Best Accuracy/ Best Resolution
Volts AC	600	1.2%±8 / 0.0001
Amps AC	400	2.0%±10 / 0.01
Volts DC	600	0.5%±2 / 0.0001
µAmps DC	500	1.0%±2 / 0.1
Ohms	50M	1.0%±5 / 0.1
Microfarads	5000	3%±5 / 0.001
Hz (clamp)	10 to 400	0.1%±5 / 0.1
Hz (leads)	10 to 1M	0.1%±5 / 0.1
Duty Cycle %	5 to 95	2%±10 / 0.1
±.5°C	-34°C to 500°C	±.5C* / 0.1
Battery	9V, 200 hrs Typical Alkaline	

* System accuracy (SC420 meter + K Type thermocouple after field calibration)

SC440 Specifications:

Measurement:	Range:	Best Accuracy/ Best Resolution
Volts AC	600	1.2%±8 / 0.0001
Amps AC	400	2.0%±10 / 0.01
Volts DC	600	0.5%±2 / 0.0001
µAmps DC	500	1.0%±2 / 0.1
Ohms	50M	1.0%±5 / 0.1
Microfarads	5000	3%±5 / 0.001
Hz (clamp)	10 to 400	0.1%±5 / 0.1
Hz (leads)	10 to 1M	0.1%±5 / 0.1
Duty Cycle %	5 to 95	2%±10 / 0.1
±.5°C	-34°C to 500°C	±.5C* / 0.1
Battery	9V, 100 hrs Typical Alkaline	

* System accuracy (SC440 meter + K Type thermocouple after field calibration)

SC460 Specifications

Measurement:	Range:	Best Accuracy/ Best Resolution
Wireless	.35m to 30m	
Volts AC	600	1.2%±10 / 0.0001
Amps AC	400	2.0%±10 / 0.01
Volts DC	600	0.5%±5 / 0.0001
µAmps DC	1000	1.0%±5 / 0.1
Ohms	50M	1.0%±5 / 0.01
Microfarads	10000	3%±5 / 0.00001
Hz (clamp)	10 to 400	0.1%±5 / 0.1
±.5°C	-50°C to 1300°C	±.5C* / 0.1
Phase Rot.	80 to 600VAC	1.2%±10 / 0.0001
Battery	9V, 100 hrs Typical Alkaline (no backlight or wireless)	

* System accuracy (SC460 meter + K Type thermocouple after field calibration)

SC400 Series**Essential Clamp Meter Line**

	SC420	SC440	SC460
True RMS		•	•
Smart Phone Compatible With Job Link App			•
Phase Rotation			•
Volts AC/DC	•	•	•
Inrush		•	•
Duty Cycle %	•	•	•
400 Amps AC	•	•	•
Magnetic Strap		•	•
Dual Display	•	•	•
Temperature °F/°C	•	•	•
Capacitance	•	•	•
Microamps DC	•	•	•
Frequency	•	•	•
Non Contact Voltage	•	•	•
50 Mega Ohm with 0.1 Resolution	•	•	•
Continuity	•	•	•
Diode Test	•	•	•
Hold	•	•	•
Clamp Probe Holder	•	•	•
Clamp Jaw Light		•	•
LCD Backlight		•	•
Low Battery Indicator	•	•	•
Battery: 9V, 100 hrs		•	•
Battery: 9V, 200 hrs	•		
Compliance with UL 3rd Edition	•	•	•

Do More with Compact Meters

SC200 Series

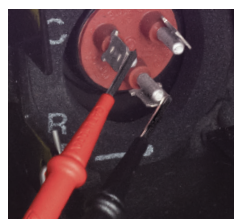
The rugged display has a broad temperature range tolerance which allows for testing in freezers and on rooftops. And the reliable temperature reacts quickly to changing environments.

- Auto-check Diode, MFD, Ohms, or continuity
- Max/min, Hold
- Hi-voltage warning
- Diode test
- Easy temperature calibration
- Low ohm range for motor windings
- Read up to 400AAC
- 0.01AAC resolution

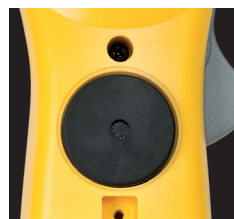




*K Type Thermocouple Plugs
Directly into Meter (SC240/SC260)*



Ohm Out a Compressor



Built in Magnetic Hanger (SC260)

SC200 Series

Compact Clamp Meter Line

	SC220	SC240	SC260
True RMS			•
Volts AC/DC	•	•	•
400 Amps AC	•	•	•
Magnetic Hanger			•
Temperature °F/°C		•	•
Capacitance		•	•
Microamps DC	•		
Non Contact Voltage	•	•	•
40 Mega Ohm with 0.01 Resolution	•	•	•
Continuity	•	•	•
Diode Test	•	•	•
Max/Min		•	•
Hold	•	•	•
LCD Backlight			•
Low Battery Indicator	•	•	•
Battery: 9V, 150 hrs			•
Battery: 9V, 200 hrs	•	•	
Compliance with UL 3rd Edition	•	•	•

Specifications:

Function:	Range:	Best Accuracy/ Best Resolution
Volts AC	600	1.2%±8 / 0.001
Amps AC	400	2.0%±10 / 0.01
Volts DC	600	0.5%±2 / 0.001
Ohms	40M	1.0%±5 / 0.01
Microfarads	4000	3%±5 / 0.001
±.5°C	-34°C to 400°C	±.5°C* / 0.1
Battery SC260	9V, 150 hrs Typical Alkaline	
Battery SC240 & 220	9V, 200 hrs Typical Alkaline	

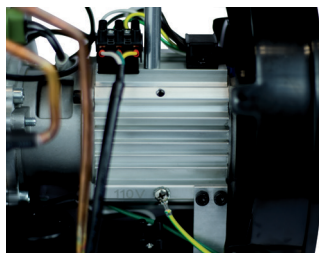
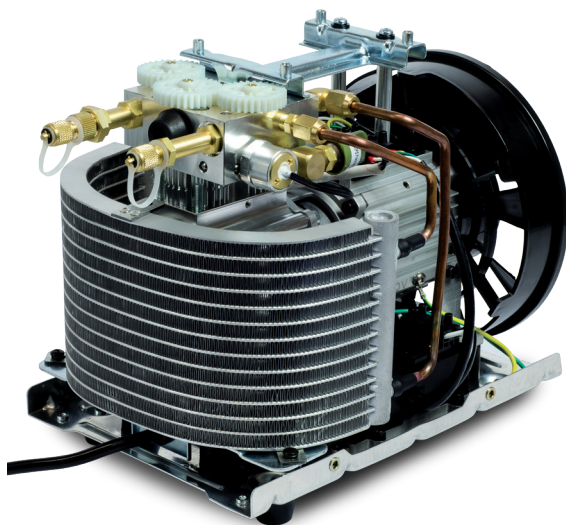
** System accuracy (SC260 meter + K Type thermocouple after field calibration)*

Digital Recovery Machine

MR45INT

Smart, 1HP Variable Speed DC Motor.

The variable smart speed DC motor is quieter, faster, smoother, and lighter for increased performance and comfort. Liquid slugging is minimised and vapor recovery is maximised. The advanced motor control also adjusts to match incoming voltage so that your machine works with longer extension cords or when the power grid is over capacity on hot days.



Lightweight (10kg)

- DC motor is small and light

Smoother and Faster

- Smooth liquid recovery
- Variable smart speed motor maximises performance
- Rubber feet and motor mounts reduce noise and vibrations
- 1 horsepower motor supplies speed and power
- Micro channel condenser cools faster, especially on hot days

Reliable

- Active electronic monitoring protection system
- Rubberized housing protects components
- Ceramic cylinders resist abrasion
- Rail slides protect the machine and building
- Long lasting piston seals
- Protected electronics for rainy days
- Operating voltage between 200 and 250 VAC

IN/OUT Port Upgrades

- Ports face out for easy access and direct flow
- Ports elevated from ground
- Rubber bumpers protect ports
- Mesh screen fitting stays in place when removing hoses
- Large rubberized dual-port routing knob

Digital Display

- Easily read the large digits
- Status messages clarify operation
- Blue backlight helps in darker situations
- Withstands long days in the sun and rain

And More

- Power cord stores on the handle
- Room to hook the handle for hoisting to the roof
- Self purge protects MR45 and our environment

Specifications:

Display	2 x 10000 count LCD with status messages
Backlight	Blue color
Measurement rate	3.3 times per second
Input Port Pressure	-76cmHg to 4100kPa
Sensor Range	
Output Port Pressure	-76cmHg to 4100kPa
Sensor Range	
High Pressure Cutoff	3850kPa, nominal
Resolution and Units	5 Kpa, 1 psig, 0.05 bar, 0,01 Mpa
Pressure Sensor Accuracy	1.3 cmHg, $\pm 0.5''$ Hg
Final Recovery Vacuum	$\pm (0.6\%$ of reading +14 kPa)
Compressor	38 cmHg, 14.9'' Hg
	Twin cylinder reciprocating (oil-less)

DC Motor	9 mm mesh screen, stainless
Power Source	376 mm x 250 mm x 344 mm
Max Current Draw	7.0 AAC
Valve	Single dual-route ball valve
Input Port Filtration	9 mm mesh screen, stainless
Dimensions	376 mm x 250 mm x 344 mm
Weight	10 kg
Operating Environment	0°C to 50°C
Storage Environment	-20°C to 60°C
Approved Refrigerants	R12, R134A, R22, R401A (MP39), R401B, R401C, R402A, R402B, R404A, R406A, R407A, R407B, R407C, R407D, R408A, R409A, R410A, R411A, R411B, R412A, R500, R502, R507, R509.

Wireless Refrigerant Scale

SRS3

Heavy Duty with Premium Performance.

Not only is the wireless scale easy to use, it's so accurate it can sense weight as low as 10g. The remote display has a backlight and a strong magnetic hanger. The platform is made of solid aluminum with rubber corners to protect against the hazards of daily use.

- Water resistant to withstand direct rain
- Solid aluminum construction
- Rubber grip pad to hold refrigerant tanks
- Hands-free testing with magnetic hat
- Connect to the Job Link® System Mobile App. Coming soon
 - Send live weights directly to your smart device
 - Record and document refrigerant use
- Long range wireless
- Flat top bumpers for larger tanks
- Works with large tanks
- Measure up to 114 kg

Specifications:

Maximum load

Auto power off

Best Accuracy

Resolution and Units

Temperature coefficient

Wireless Range

Radio Frequency

Battery Type

Battery Life

Operating environment

Weight

Water resistant platform

114 kg

30 minutes of inactivity (no change in weight or buttons pressed), (APO can be disabled)

+/- 0.03%rdg +10g

kg g (10 g), kg (0.1 kg), g (10 g)

0.1 x (specified accuracy) per 0.6 C

30 meters line of sight.

Obstructions affect distance.

2.4 GHz

Remote Display: 9V, NEDA 1604, JIS 006P, IEC 6F22

Platform: 6 x AA, NEDA 15A, JIS UM3, IEC LR6

Lo Batt will be displayed on the remote and the scale's LED will blink RED red when battery is low.

Remote: 80 hours typical alkaline

Platform: 200 hours typical alkaline

0°C to 50°C at <75% RH

3.3 kg

Designed to IP55



- Read in grams only, kilograms only, or kilograms and grams
- 200 hour platform battery life



Remote stores safely in platform

Digital Vacuum Gauge

SVG3

Easy, Loaded, Rugged.

Easy to use and built tough to handle day-to-day use in the field.

- Rate indicator
- Schrader depressor
- micron, mmHg, mbar, mTorr, Torr, Pascal
- Alarms and stopwatch

Specifications:

Operating Environment	0°C to 50°C, under 75%RH
Units	microns, mmHg, mbar, mTorr, Torr, Pascals
Range	9,999 microns (Hg) to 0 microns (Hg)
Accuracy	±(5% of reading + 5 microns), 50 to 1000 microns
Best Resolution	1 micron (Hg)
Max Overload	500Psi (35kg/cm ²)
Power	4 x AAA (included)
Battery Life	40 hours typical (alkaline)
Auto-off	15 minutes at ATM pressure



Superheat and Subcooling

SSX34

Easy charging with built in P-T charts.

Measures suction or liquid line pressure and temperature.

Automatically calculates and displays real-time superheat or subcooling.

- Charge to superheat and subcooling
- Push button atmospheric pressure calibration
- R-134A, R-404A, R-410A, R-22
- Hands free operation with magnetic hanger

Included

Thermocouple Pipe
Clamp - TC24

Specifications:

Operating Environment	0°C to 50°C at <75%RH
Pressure Range	74cmHgV to 500PSIG, 74cmHgV to 4000KPa
Temperature Range	-40°C to 204°C
Pressure Accuracy	74cmHgV(acuum) to 0: ±0.5"HgV/0.01, 74cmHgV to 0: ±0.4KPa/0.01 0 to 200Psi: ±1Psi/0.1, 0 to 1378 KPa: ±7KPa/1, 200 to 500Psi: ±(0.3%+1)Psi/1, 1378 to 3447KPa: ±(0.3%+7)KPa/1
Resolution	±0.5°C @ -40°C to 93°C after field calibration/0.1°C ±1.0°C @ 93°C to 204°C after field calibration/0.1°C
Temperature Accuracy / Resolution	800Psi
Pressure overload	9V (included)
Battery	200 hrs typical (alkaline) with low battery indicator
Battery Life	Automatically turns off after 15 minutes
Auto-off	



Dual In-duct Psychrometer

SDP2



Do More with One Tool.

- Easy temperature split in real-time
- Simultaneous in-duct supply and return evaporator readings
- Displays live temperature split, target evaporator exit temperature, and enthalpy change
- Smart phone compatible with Job Link app
JL2 transmitter required



Specifications:

Batteries: 9V

Battery Life 120 hrs typical alkaline (no backlight or wireless)

Sensor Type Precision thermistor and capacitive polymer film

Wireless Range 30.5 Meters

Measurement	Range	Best
Resolution		
Relative Humidity:	0-100%	±2.5%/0.1%
Temperature:	-20 to 60°C	0.5°C/0.1°F

Included

Dual In-Duct Psychrometer SDP2
Two Threaded RCONEs-RCONE1
Blow Molded Case with Padding
Operators Manual



Dual Temperature Thermometer

ST4

Heavy Duty Dual Temp.

- Measure both T1 & T2 simultaneously
- Calculates T1 - T2
- Easy field calibration
- Superior temperature compensation

Included

Case with Hanger
2 K Type Thermocouples – ATB1
2 Velcro Straps

Specifications:

Measurement Range	-50°C to 204°C (to 1093°C with optional hi-temp thermocouple)
Measurement Rate	2.5 readings/second
Resolution	0.1°
Accuracy	-15°C, -58°F to 0°C ±(0.3% rdg + 17°C), -36°C to 538°C ±(0.5% rdg + 17°C), 538°C to 1093°C
Accuracy After ice Bucket Calibration	±5°C, -1°C to -49°C

CFM Without a Hood

STA2

The STA2 In Duct Hot-wire Anemometer calculates CFM from air velocity and free area.

With in-duct traversing the STA2 is an excellent alternative to costly, bulky hoods for air balancing.

- Fast response time
- Dual display to show any combination of real-time CFM, air velocity, or temp
- Minimizes effects of turbulence with time or test point averages
- Fast, accurate temps
- Affordable air balancing

Included

Stabilizing Cone - RCONE1

Padded Blow-molded Case

Specifications:

Battery	9V
Battery Life	20-30 hrs approx. (alkaline)
Connector Type	Thermistors

Measurement	Range
Air Velocity	40 to 3900fpm (0.20 to 20.00m/s)
Temperature	-20 to 60°C

**Best Accuracy/
Best Resolution**
±(5%+1dgt)rdg or
±(1%+1dgt) Full Scale
±0.5°C/0.1°F



+31 20 369 0470

25



Carbon Monoxide Detector

SCM4

Finds CO Sources Fast.

The SCM4 has a very fast reaction time. This rugged instrument can help you hunt down sources of the potentially life-threatening poisonous gas.

- Fast enough for walk-around testing
- Calibrates to ambient quickly with ZERO button
- Audio and visual alerts
- Magnetic hanger
- Bright, blue backlight on dual display
- Field replaceable sensor

Specifications:

Range

0 to 1000 ppm (continual use)
0 to 2000 ppm (5min max exposure)

Air sample range

0 to 41°C
15% to 90% relative humidity

Initial accuracy

@ 23°C -13°C, <75%RH;
after zeroing

0 to 15 ppm: $\pm 5\% \text{rdg} \pm 1 \text{ppm}$
16 to 35 ppm: $\pm 5\% \text{rdg} \pm 2 \text{ppm}$
36 to 1000 ppm: $\pm 5\% \text{rdg} \pm 5 \text{ppm}$

Sensor calibration

Sensor type

Factory calibrated at 205 ppm.
Electrochemical (specific to CO)

Operating environment

0 to 50°C

Battery

9V (included)

Battery life

150 hrs typical (alkaline)

Auto-off

15 minutes

Dual Port Manometer

SDMNS

Gas Pressure, Static Pressure AND Differential Pressure.

Rugged standalone dual-port manometer that measures differential, absolute, and static pressure.

- Measures Inches WC, mm WC,
- mBar, and PSI
- Magnetic hanger
- Data HOLD
- Measures P1, P2, or P1-P2
- Easy to zero
- Battery check function

Included

Two Adapters – RMA316

Two 3/16" Tubes with Brass Fittings – RDSMHOSE



Specifications:

Operating Environment	0°C to 50°C at <75%RH
Accuracy/Range	mmWC: ± 0.5 on 0.00 to ± 51.0 , $\pm 1.5\%$ FS on 51.0 to ± 1500 mbar: ± 0.05 on 0.00 to ± 5.00 , $\pm 1.5\%$ FS on 5.00 to ± 150.0 psi: ± 0.001 on 0.000 to ± 0.07 , $\pm 1.5\%$ FS on 0.07 to ± 2.000
Fitting	Threaded brass fitting (male)
Resolution	025 mm water column
Overload	18 psi
Battery	9V (included)
Battery Life	200 hrs typical with low battery indicator
Auto-off	Automatically turns off after 15 minutes

Gun Style IR Thermometer with Laser

SIG1

The SIG1 takes accurate surface temperatures. The narrow 10:1 field of view allows techs to target smaller areas.

- 10:1 field of view
- Select °F or °C
- Range: -30°C to 550°C



IR Thermometer with Laser

SIR2

Ergonomic pocket IR with laser.

- 6:1 field of view
- MIN/MAX automatic data hold
- Select °F or °C



Megohmmeter

SMG5

- Helps predict compressor failure
- Great for preventative maintenance
- One handed testing
- Long probe tip for hard to reach terminals
- Bright backlight



In-duct Thermometer

SPK2

- Quick and easy in-duct measurements
- Hanging hook for hands free temps
- Fits easily in pocket
- Bright backlight



SPK3**Convenient 2-Way Temp.**

Easy to use compact tool for quick in-duct, register, and ambient temperatures.

- 8:1 IR
- Hands free in-duct temps
- Quick T1-T2 calculations
- Max/min/hold

**TC24**

**Pipe Outer Diameter
Measurement Range
Accuracy**

9.5mm to 34.9mm
-46°C to 125°C
±2.2°C thermocouple only
±0.6°C after field calibration

**Stabilization Time
Sensor Type**

30 seconds typical
K Type thermocouple
(nickel chromium/nickel aluminum)

**Plug
Cable Length**

K Type male mini plug
1.8m



TC24

ATC1R

**Pipe Outer Diameter
Measurement Range**

3.5mm to 19mm
-50°F (-46°C) to 257°F (125°C)
maximum continuous operation

Accuracy

±2.2°C thermocouple only (±.5°C after field calibration, 0°C to 80°C)

Plug

K-type thermocouple male mini plug

Stabilization Time

Less than 30 seconds



ATC1R

ATC2

**Pipe Outer Diameter
Measurement Range**

9.925mm to 57.15mm
-46°C to 125°C
maximum continuous operation

Accuracy:

±2.2°C (±.5°C typical after field calibration)

Insulation and Resin Limit

82°C (continuous use)

Plug

K-type thermocouple male mini plug

Typical Stabilization Time

Less than 1 minute



ATC2

HVACR Inspection Tool Bag

BG36

The BG36 Inspection Tool Bag is an easy to carry, over the shoulder bag with an easy to open pop top. The pop top protects your tools from inclement weather, and from spilling out if dropped or knocked over. Plus it provides extra space for small tools and drill bits. While the strong magnetic tray holds cabinet screws and washers so they're never lost.

Sectioned interior pockets keep everything organized. Zippered side pocket and large interior adjustable section protect meters from hand tools. Large open front pocket and expandable side pocket allow for additional storage. Sturdy weather protected base keeps bag standing upright.

The BG36 is extremely durable with reinforced construction, ballistic grade nylon, and ripstop nylon. Plus it's comfortable to wear with a padded, breathable back panel and adjustable strap.

- Easy access pop top
- Quick locking magnetic closure
- Isolated pockets for test instruments
- Compact rugged design
- Magnetic tray
- Weather protected sturdy base



HVACR Service Tool Bag

BG44

The BG44 Single Strap Bag System is specifically designed to fit the needs of the HVACR professional. A smaller and easier bag crafted for the initial call to test and assess a system.

Padded outside pockets keep instruments protected and away from hand tools. A strong and sturdy base keeps the bag upright and not directly on the ground.

The interior tool rack houses hand tools for easy access and quick visibility so missing tools don't get left behind. Special accessories include a magnetic tray, water bottle/ wasp spray strap, electrical tape strap, small plastic tray storage in bottom, and drill holster. All in a compact bag that fits snugly to the body to fit in tight places like crawl spaces and ladder cages.

- Compact for tight crawl spaces and ladder cages
- Water resistant material
- Elevated sturdy base
- Magnetic strip to keep screws in one place
- Padded outside pockets to protect meters
- Store small tablet in the padded slip pocket
- Plenty of D rings to connect accessories
- Tool organizer for hand tools



Distributed by:

Fieldpiece Instruments B.V.
Kingsfordweg 151
1043GR Amsterdam
The Netherlands
+31 20 369 0470
europe@fieldpiece.com

Fieldpiece Instruments, Inc.
1636 West Collins Ave
Orange, California 92867
U.S.A.
+1 714 634 1844
orders@fieldpiece.com

